

MZ

بلبرینگ قفلی



بلبرینگ علی



www.1abc.ir

۰۲۱-۳۳۹۷۱۸۴۵



MZ

بلبرینگ قفلی (یک طرف گرد ، یک استاپ)

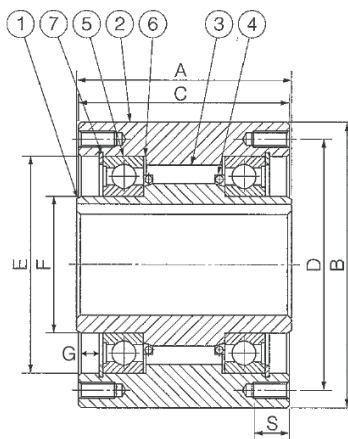
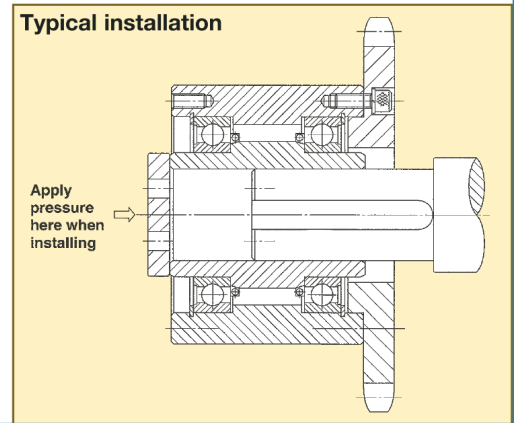
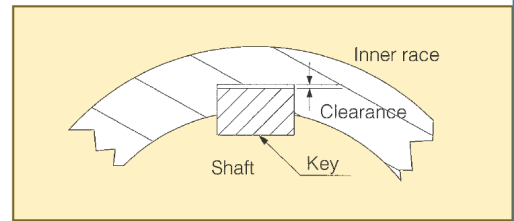
Model	Torque Capacity (N-m)	Drag Torque (N-m)	Max. Overrunning (r/min)		Max. indexing (cycle/min)	Bore Size		A	B	C	PCD D	E (M6)	F	G	H-M No. of Tapped Holes× Size×Pitch	S	Weight (kg)
			Inner Race	Outer Race		Dia. (H7)	Keyway										
MZ15	186	0.20	2200	900	150	15	5×2.3	62	68	60	58	47	25	5.5	6×M5×P0.8	10	1.4
MZ17	215	0.20	2000	800	150	17	5×2.3	66	75	64	64	52	28	6.3	6×M5×P0.8	10	1.8
MZ20	323	0.29	1900	700	150	20	6×2.8	67	80	65	68	55	30	7.6	6×M6×P1.0	12	2.0
MZ30-22	735	0.39	1800	500	150	22	6×2.8	82	100	80	88	75	45	8.9	6×M8×P1.25	16	3.7
MZ30-25						25	8×3.3										
MZ30						30	10×3.3										
MZ35	1080	0.49	1700	300	150	35	10×3.3	87	110	85	95	80	50	8.7	6×M8×P1.25	16	4.8
MZ45-40	1620	0.69	1700	300	150	40	12×3.3	92	125	90	110	95	60	8.4	8×M8×P1.25	16	6.2
MZ45						45	14×3.8										
MZ60-50	2110	0.98	1600	250	150	50	14×3.8	102	155	100	140	125	80	9.1	8×M8×P1.25	16	10.2
MZ60-55						55	16×4.3										
MZ60						60	18×4.4										
MZ70-65						65	18×4.4										
MZ70	3040	1.27	1300	250	150	70	20×4.9	105	175	103	162	145	95	8.6	8×M8×P1.25	16	13.2

Installation and Usage

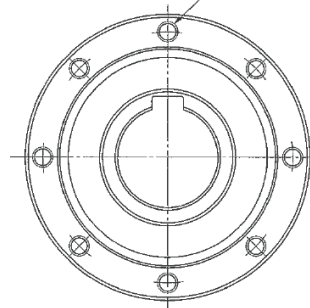
- MZ Series Cam Clutch is Shielded by shield bearings on both ends, packed with a special grease, and are ready for use. No additional lubricant is required.
- For attaching pulleys, gears or sprockets to the clutches, insert hubs (with f_7 tolerance of ISO R773) along the inner surface of the outer race and screw the bolts (high tension) into the tapped holes on the clutch end.

Model	Nominal diameter (mm)	Relative shaft tolerance (mm)
MZ15	15	+0 to -0.018
MZ17	17	+0 to -0.018
MZ20	20	+0 to -0.021
MZ30	30	+0 to -0.021
MZ35	35	+0 to -0.025
MZ45	45	+0 to -0.025
MZ60	60	+0 to -0.030
MZ70	70	+0 to -0.030

- Recommended shaft tolerances are shown in the table on the lower left.
- External thrust load should be supported by other devices, not by the Cam Clutch.
- Use only a parallel key to secure the clutch to the shaft. Do not use a tapered Key.
- When mounting the clutch onto the shaft, apply pressure to the inner race but never to the outer race. See the illustration on the right.
- For vertical mounting, please consult TSUBAKI.
- Ambient temperature range is -5° to 40° C.
- Key to be used should be in accordance with ISO R773. (DIN 6885.1)



H-M equally spaced on both sides



- Inner race
- Outer race
- Cam
- Spring
- Bearing (ZZ type)
- Side plate
- Snap ring